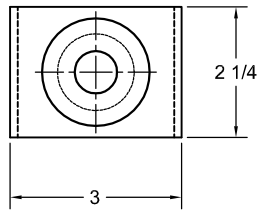
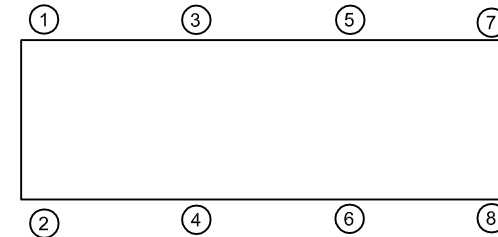
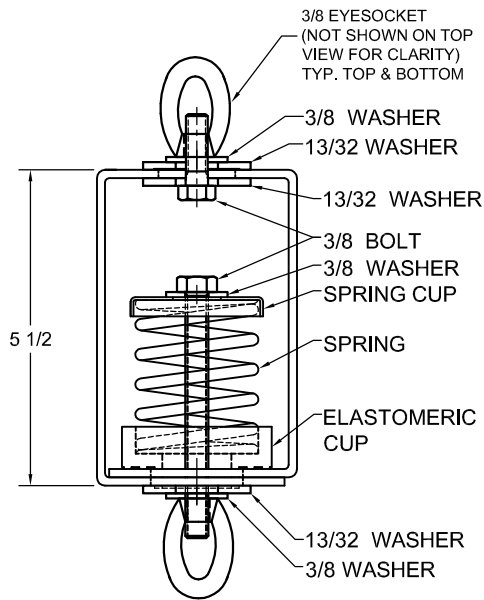


REV.	DESCRIPTION	DATE	BY



STANDARD SHSC-1C HANGER ARRANGEMENT				
MODEL DESIGNATION	MAX. LOAD (LBS.)	DEFL. (IN.)	SPRING RATE (LBS/IN)	COLOR SPRING
SHSC-1C-50	50	1	50	BLUE
SHSC-1C-100	100	1	100	TAN
SHSC-1C-150	150	1	150	RED
SHSC-1C-250	250	0.83	300	BLACK
SHSC-1C-300	300	0.75	400	DK. YELLOW
SHSC-1C-370	370	0.75	493	YELLOW



ISOLATOR SELECTIONS	
LOC 1:	LOC 2:
LOC 3:	LOC 4:
LOC 5:	LOC 6:
LOC 7:	LOC 8:
CUSTOMER EQPT. TAG:	

NOTE: MATERIAL SHOWN IS FOR (1) SET.

OTHER MATERIALS, COMPOUNDS, OR FINISHES WITH EQUAL OR SUPERIOR PROPERTIES MAY BE SUBSTITUTED AS THEY BECOME AVAILABLE.

**NOTES:**

- STANDARD FINISH: HANGER BOX; GALVANIZED STEEL, SPRING - POWDER COAT.
- ALL DIMENSIONS IN INCHES. INTERPRET PER ANSI Y14.
- ALL DIMENSIONS ARE FOR REFERENCE, DIMENSIONS SHOWN AS NOMINAL.
- ALL SPRINGS ARE DESIGNED WITH MINIMUM 50% OVER-TRAVEL.
- HANGER BOXES ARE AVAILABLE PRE-COMPRESSED UP TO THEIR DESIGNATED MAX. LOAD. PERCENTAGE OF PRE-COMPRESSION TO BE DETERMINED BY ENGINEERED APPLICATION OR AS REQUESTED BY CUSTOMER. CONSULT FACTORY FOR POSSIBLE ADDITIONAL PARAMETERS AND OR LIMITATIONS.
- SOME ASSEMBLIES MAY INCLUDE ADDITIONAL OR VARIOUS SIZE WASHERS.

**CERTIFIED FOR:**

JOB NAME: \_\_\_\_\_  
 CUSTOMER : \_\_\_\_\_  
 CUSTOMER P.O.: \_\_\_\_\_  
 SALES ORDER: \_\_\_\_\_

**MODEL SHSC-1C 60-370 LBS.  
 LOW PROFILE SPRING HANGER WITH  
 EYESOCKET  
 1 INCH DEFLECTION**



**THE VMC GROUP**  
*The Power of Together*  
 Bloomingdale, NJ 07403  
 Houston, TX 77041

SCALE :  
 NONE  
 SHEET:  
 1 OF 1



DRAWING NO.: \_\_\_\_\_ REVISION